

32 Lovelace Drive
Pyrford
Woking
GU22 8QY





32 Lovelace Drive
£770,000

Local Authority

Council Tax Band

F

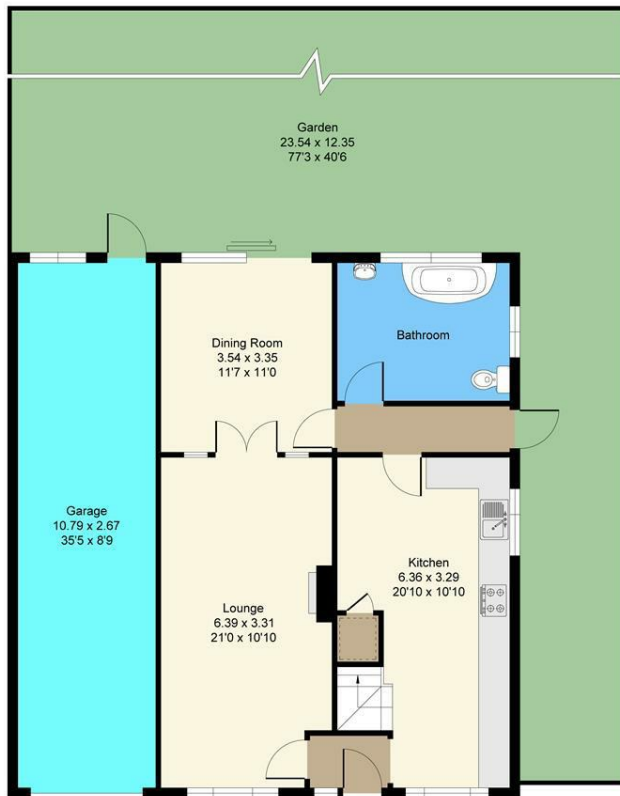
Directions

Energy Efficiency Rating		
	Current	Potential
Very energy efficient - lower running costs		
(92 plus) A		
(81-91) B		
(69-80) C		
(55-68) D	66	
(39-54) E		
(21-38) F		
(1-20) G		
Not energy efficient - higher running costs		

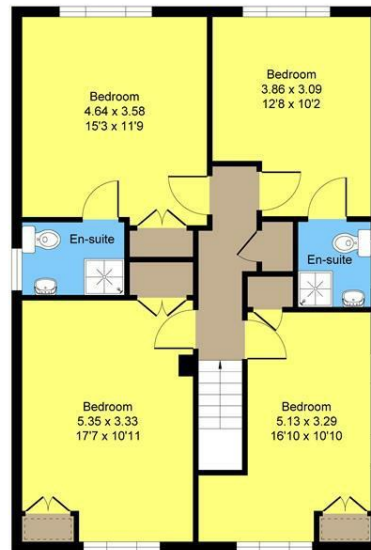
England & Wales EU Directive 2002/91/EC



Agents Note: Whilst every care has been taken to prepare these particulars, they are for guidance purposes only. All measurements are approximate and are for general guidance purposes only and whilst every care has been taken to ensure their accuracy, they should not be relied upon and potential buyers/tenants are advised to recheck the measurements



Ground Floor



First Floor

Marketed By Mint Homes Ltd

TOTAL FLOOR AREA : 165.14 sq.m. (1778 sq.ft.) approx.
(Including Garage)

Marketed by mint homes List. Whilst every attempt has been made to ensure the accuracy of the information contained here, measurements of doors, windows, rooms and any other items are approximate and no responsibility is taken by any error.

Produced By Planpixel.co.uk



Mint Homes
14 Nicholas Gardens
Pyrford
Surrey
GU22 8SD



Contact
01932 336177
hello@minthomes.uk
minthomes.uk

